

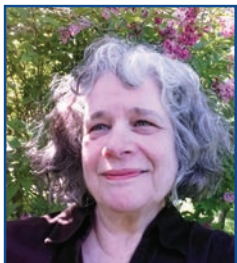
# HealthyLeaders

5210 CHALLENGE 2019



**Kate Dexter**  
Deputy Mayor  
City of Port Angeles

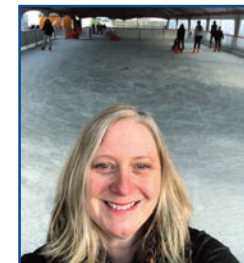
[5210CLALLAM.org](http://5210CLALLAM.org)



**Catherine McKinney**  
Program Coordinator  
Clallam Mosaic



**Arianna Flores-Cisneros**  
Community Resource Navigator  
North Olympic Healthcare Network



**Wendy Sisk, LMHC**  
Chief Executive Officer  
Peninsula Behavioral Health



**M.E. Bartholomew**  
Steering Committee Member  
Compassion Clallam County



**Celeste Schoenthaler**  
Executive Director  
Olympic Community of Health



**Patsene Dashiell**  
Communications & Community Relations Coordinator, Port Angeles School District



**Russ Britton**  
Pastor  
Dungeness Valley Lutheran Church



**Jennifer Burkhardt**  
Chief Human Resources Officer, General Counsel  
Olympic Medical Center



**Michael Dashiell**  
Editor  
Sequim Gazette



**Marissa Martin, MS, RD, CD**  
Registered Dietitian and Diabetes Coord.  
Lower Elwha Wellness Center



**Eric Lewis**  
Chief Executive Officer  
Olympic Medical Center



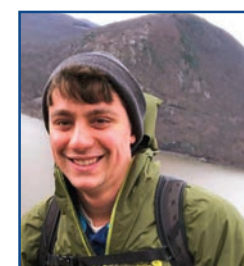
**Jim Stoffer**  
Board Member  
Sequim School District & Sequim Chamber



**Jody Potter**  
Wellness Manager  
Lower Elwha Wellness Center



**Lee Schilling**  
Group Exercise Coordinator  
Olympic Peninsula YMCA



**Benji Astrachan**  
VISTA Community Food Project Coordinator  
WSU Extension



**Larry Jeffryes**  
Founder  
Meals for Sequim Kids Fund



**Patty Waite**  
Executive Director  
Parenting Matters Foundation



**Sarah Truett**  
Gleaning Program Coordinator  
WSU Extension

WE'RE IN – ARE YOU?